

FS3000LED



Light Efficiency:

32 Lumen/Watt

Light Quality:

CRI: 95.4

Color Temperature:

5871 K

Output: 7651 lm

Peak: 135414 cd

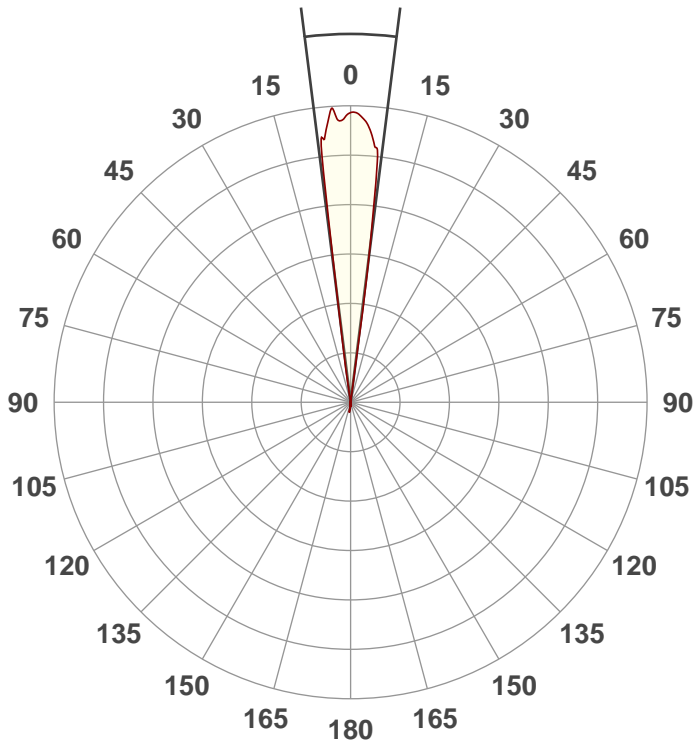
Power: 236.8 W

PF: 1.0



Beam Angle

14.3°



Test:

Zoom In

Date:

6/24/2020

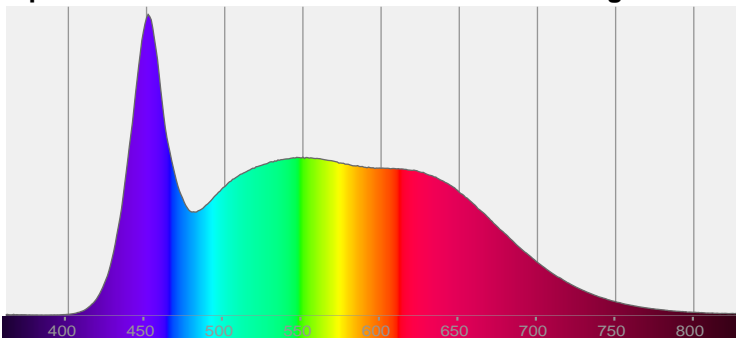
Note:



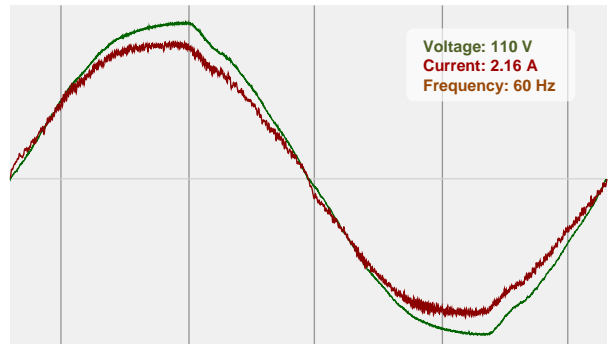
CIE 1931
x: 0.325
y: 0.326

Spectra

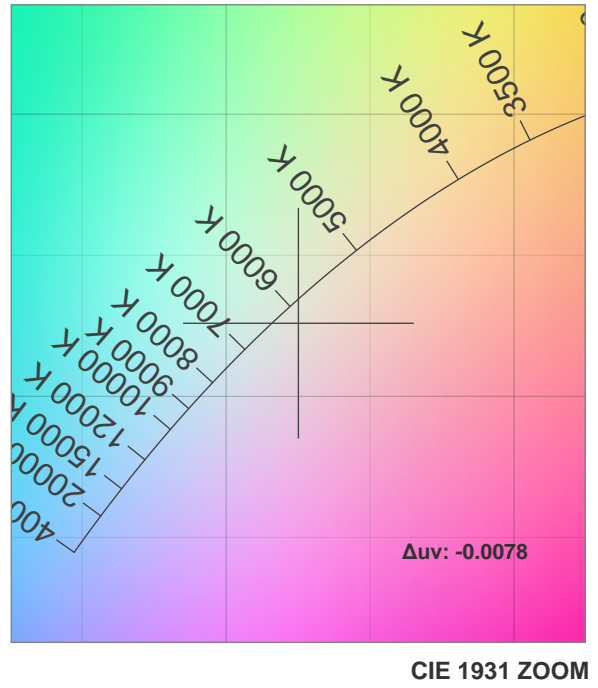
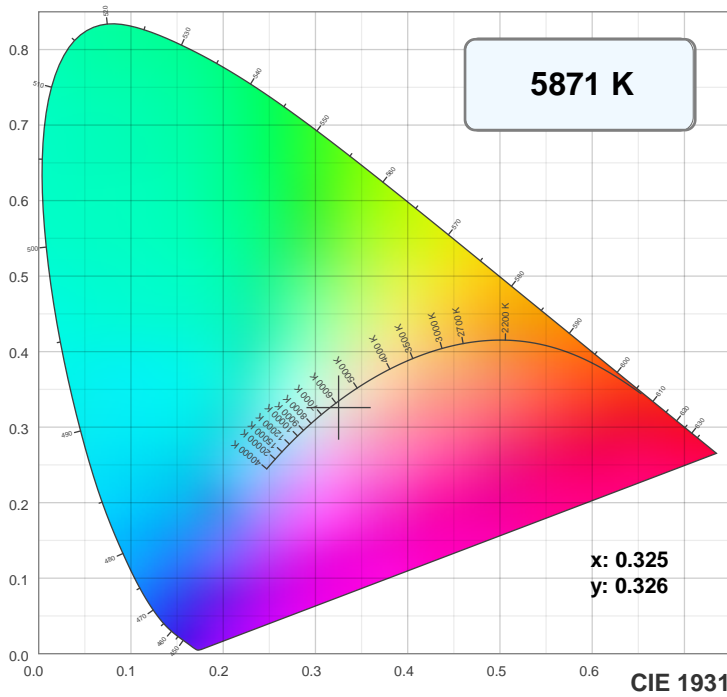
Dominant Wavelength: 829nm



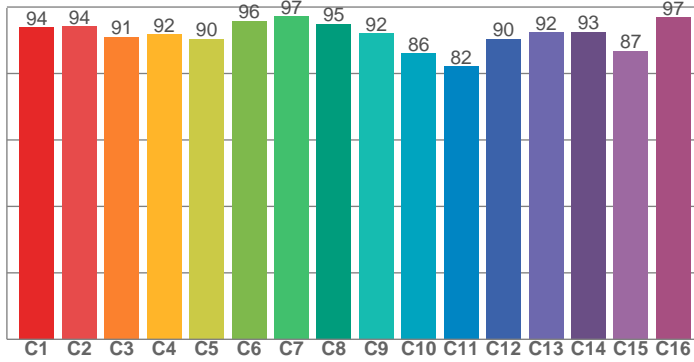
Power



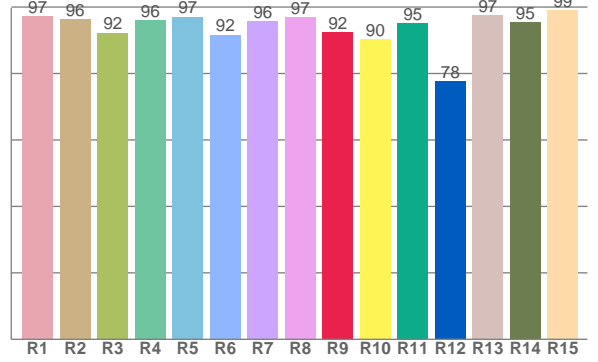
Color Details



TM30: 91.5



CRI: 95.4 (R1-R8)



CRI R values, only R1-R8 are used to calculate final CRI value

R1	R2	R3	R4	R5	R6	R7	R8	R9	R10	R11	R12	R13	R14	R15
97.2	96.4	92.3	96.1	97.1	91.6	95.8	97.0	92.4	90.3	95.2	77.6	97.4	95.3	98.9

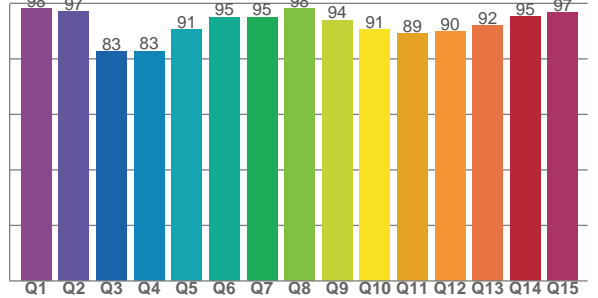
TM30 C values, 16 binned values out of total of 99 C values

C1	C2	C3	C4	C5	C6	C7	C8	C9	C10	C11	C12	C13	C14	C15	C16
93.9	94.1	91.0	91.8	90.4	95.9	97.1	94.9	92.0	86.1	82.1	90.4	92.3	92.6	86.9	96.9

CQS Q values

Q1	Q2	Q3	Q4	Q5	Q6	Q7	Q8	Q9	Q10	Q11	Q12	Q13	Q14	Q15
98.0	97.0	82.7	82.7	90.6	95.0	95.0	98.2	94.0	90.5	89.0	89.9	92.0	95.2	96.6

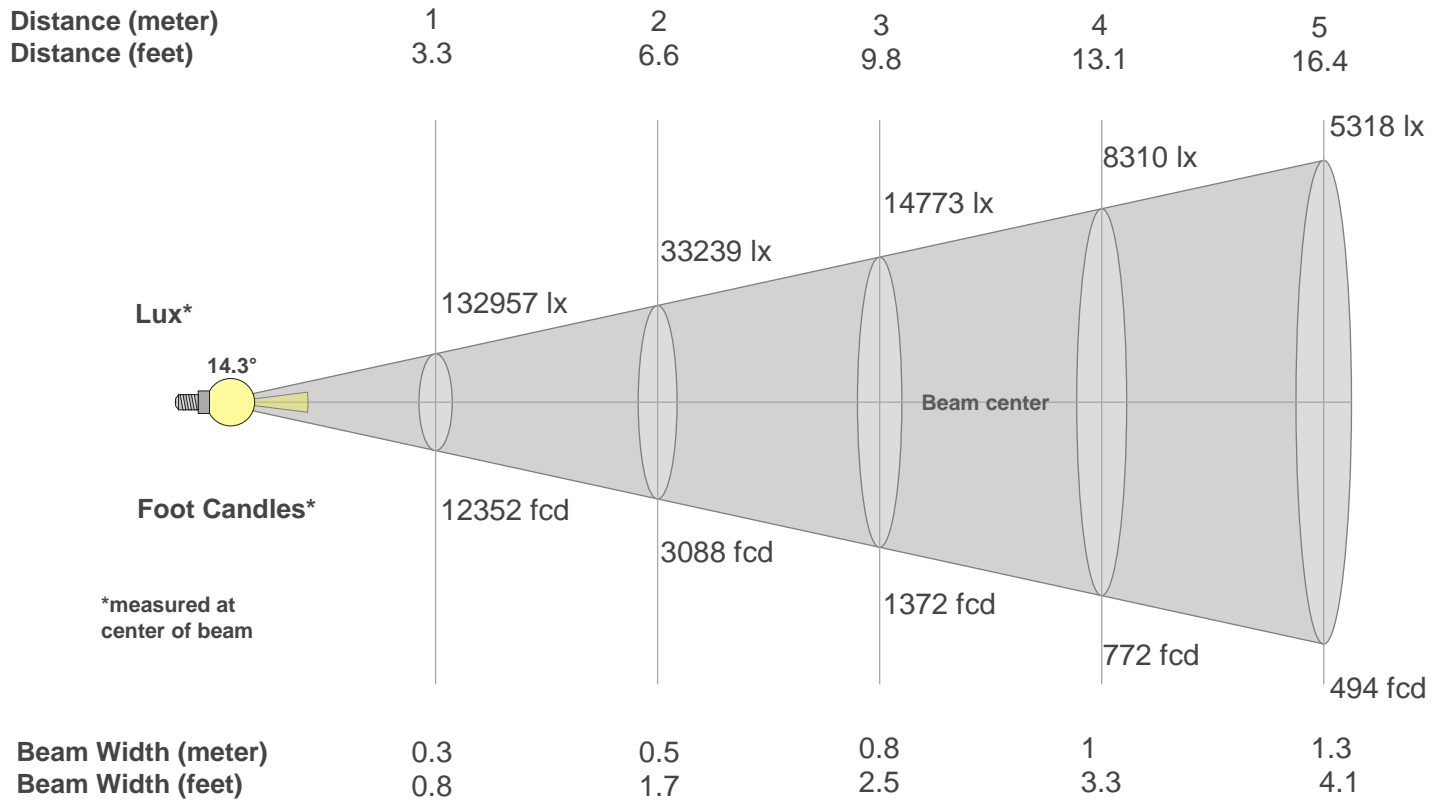
CQS: 91.1



Color Parameters

Color Temperature	Color Rendering Index	Red Component	Color Fidelity	Color Gamut	Color Quality Scale	Color Coordinate CIE 1931	Color Coordinate CIE 1931	Color Coordinate	Color Coordinate	Color Deviation from Black Body
CCT	CRI	CRI R9	TM30 Rf	TM30 Rg	CQS	x	y	u	v	Δuv
5871 K	95.4	92.4	91.5	102.2	91.1	0.325	0.326	0.208	0.312	-0.0078

Beam Details



Beam Intensities from 1-20m

m	1	2	3	4	5	6	7	8	9	10	11	12	13	14	15	16	17	18	19	20
ft	3.3	6.6	9.8	13.1	16.4	19.7	23	26.2	29.5	32.8	36.1	39.4	42.7	45.9	49.2	52.5	55.8	59.1	62.3	65.6
lx	132957	33239	14773	8310	5318	3693	2713	2077	1641	1330	1099	923	787	678	591	519	460	410	368	332
fcd	12352.1	3088	1372.5	772	494.1	343.1	252.1	193	152.5	123.5	102.1	85.8	73.1	63	54.9	48.3	42.7	38.1	34.2	30.9

Intensities in 0° C-plane

0°	1°	2°	3°	4°	5°	6°	7°	8°	9°	10°	11°	12°	13°	14°	15°	16°	17°	18°	19°
133K	131K	130K	132K	133K	127K	119K	82K	18K	0K	0K	0K	0K	0K	0K	0K	0K	0K	0K	0K
100%	99%	98%	99%	100%	95%	89%	62%	13%	0%	0%	0%	0%	0%	0%	0%	0%	0%	0%	0%

Intensities in 90° C-plane

0°	1°	2°	3°	4°	5°	6°	7°	8°	9°	10°	11°	12°	13°	14°	15°	16°	17°	18°	19°
133K	131K	130K	132K	133K	127K	119K	82K	18K	0K	0K	0K	0K	0K	0K	0K	0K	0K	0K	0K
100%	99%	98%	99%	100%	95%	89%	62%	13%	0%	0%	0%	0%	0%	0%	0%	0%	0%	0%	0%

Intensities in 180° C-plane

0°	1°	2°	3°	4°	5°	6°	7°	8°	9°	10°	11°	12°	13°	14°	15°	16°	17°	18°	19°
133K	133K	132K	129K	126K	120K	113K	77K	20K	0K	0K	0K	0K	0K	0K	0K	0K	0K	0K	0K
100%	100%	99%	97%	95%	91%	85%	58%	15%	0%	0%	0%	0%	0%	0%	0%	0%	0%	0%	0%

Intensities in 270° C-plane

0°	1°	2°	3°	4°	5°	6°	7°	8°	9°	10°	11°	12°	13°	14°	15°	16°	17°	18°	19°
133K	133K	132K	129K	126K	120K	113K	77K	20K	0K	0K	0K	0K	0K	0K	0K	0K	0K	0K	0K
100%	100%	99%	97%	95%	91%	85%	58%	15%	0%	0%	0%	0%	0%	0%	0%	0%	0%	0%	0%

Beam Angle 50%	Field Angle 10%	Cutoff Angle 2,5%	Intensity Ratio in 120° Cone	Intensity Ratio in 90° Cone
14.3°	16.3°	16.8°	87.9%	85.9%